

Webinar Part 2 - iRite IDE - Startup

File Edit View Project Tools Window Help

100%

Toolbox

Scales

Serial I/O

Analog

Pulse Counter

Digital I/O

Math

Setpoints

Storage

Timers

User Interface

Comparisons

Conversions

System Support

Printing

Execute Print Format

Set Print Text

Start Page

Printkeypressed

Project Notes

Startup

User1Keypressed

Start

Display Message

Set User Key Text

Set User Key Text

Set the text for the selected user-defined soft key.

Project Explorer

Expand All

Webinar Part 2

Event Handlers

Printkeypressed

User1Keypressed

Procedures

Startup

Project Explorer

Event Browser

Properties

Misc

KeyNumber1

KeyTextCall Print Format

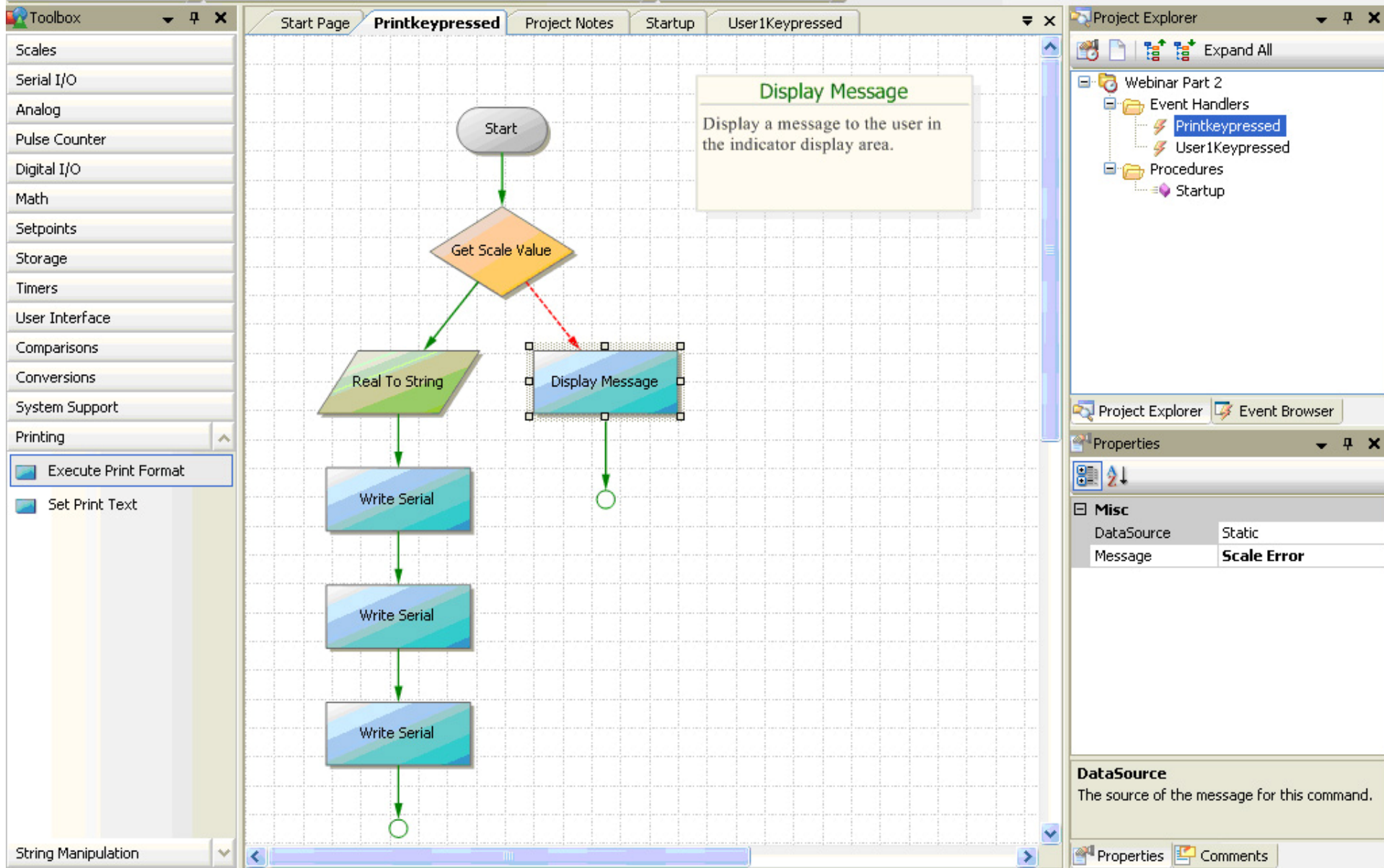
KeyNumber

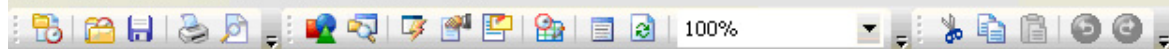
The number of the user key to edit.

Properties

Comments

(372,0)





Toolbox

- Scales
- Serial I/O
- Analog
- Pulse Counter
- Digital I/O
- Math
- Setpoints
- Storage
- Timers
- User Interface
- Comparisons
- Conversions
- System Support
- Printing
 - Execute Print Format
 - Set Print Text

String Manipulation

(247,0)

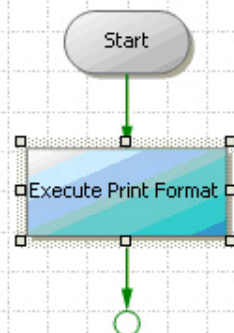
Start Page

Printkeypressed

Project Notes

Startup

User1Keypressed

**Execute Print Format**

Trigger a print operation in the indicator using the specified print format.

Project Explorer

Expand All

- Webinar Part 2
 - Event Handlers
 - Printkeypressed
 - User1Keypressed
 - Procedures
 - Startup

Project Explorer

Event Browser

Properties



Misc

DataSource

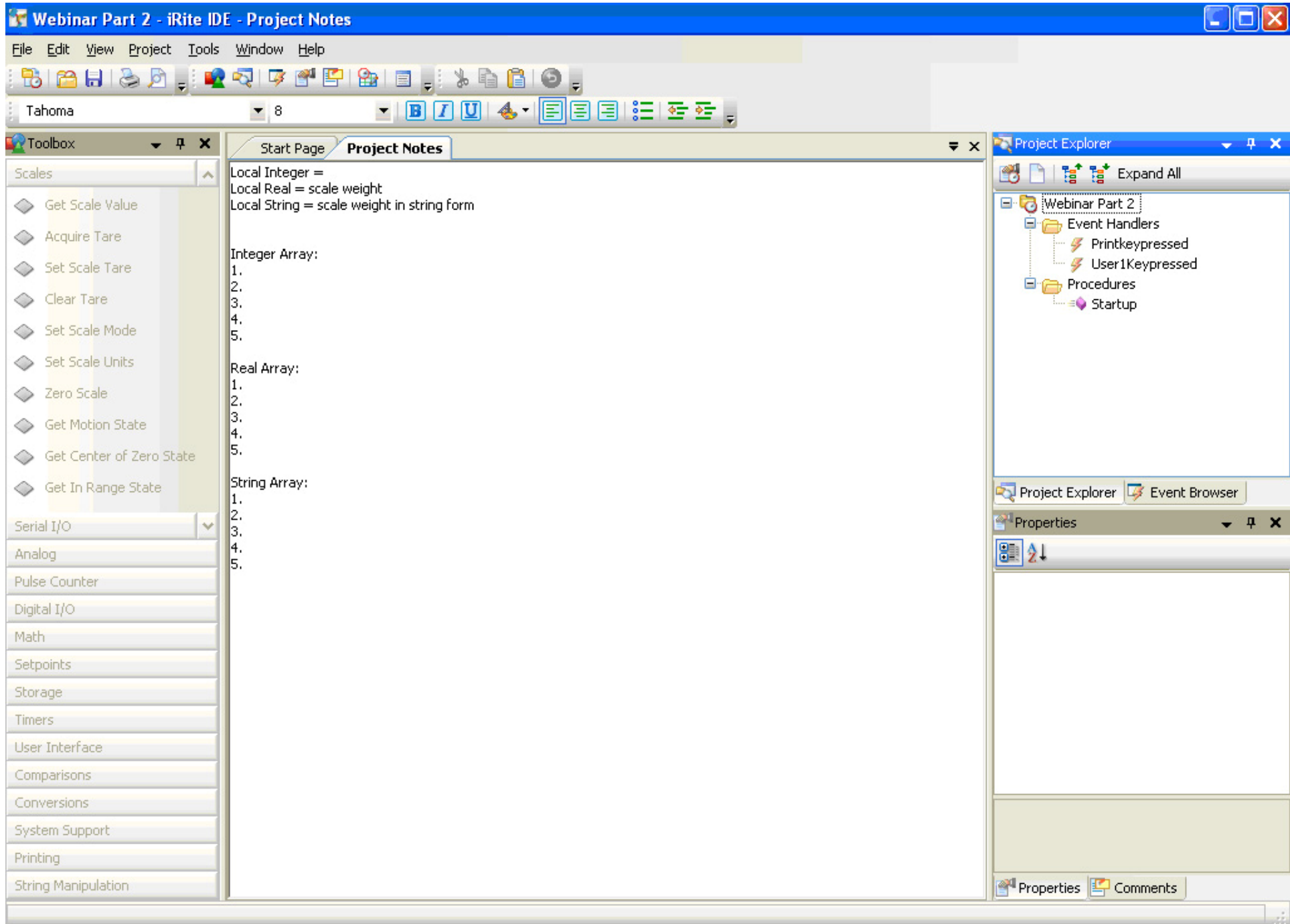
Auxiliary1Format

DataSource

The print format that will be triggered.

Properties

Comments



Webinar Part 3 - iRite IDE - Startup

File Edit View Project Tools Window Help

Toolbox

Scales

Serial I/O

Analog

Pulse Counter

Digital I/O

Math

Setpoints

Storage

Timers

User Interface

Prompt User for String

Prompt User for Integer

Prompt User for Real

Ask User

Wait for Keypress

Display Message

Clear Message

Set User Key Text

Comparisons

Conversions

System Support

Printing

String Manipulation

Start Page Startup

Set User Key Text

Set Digital Output State

Set Digital Output State

Display Message

Set Setpoint Value

Display Message

Display Message

Set User Key Text

Set the text for the selected user-defined soft key.

Project Explorer

Webinar Part 3

Event Handlers

Sp1Trip

User1Keypress

Timer1Trip

Sp2Trip

Procedures

Startup

Project Explorer Event Browser

Properties

Misc

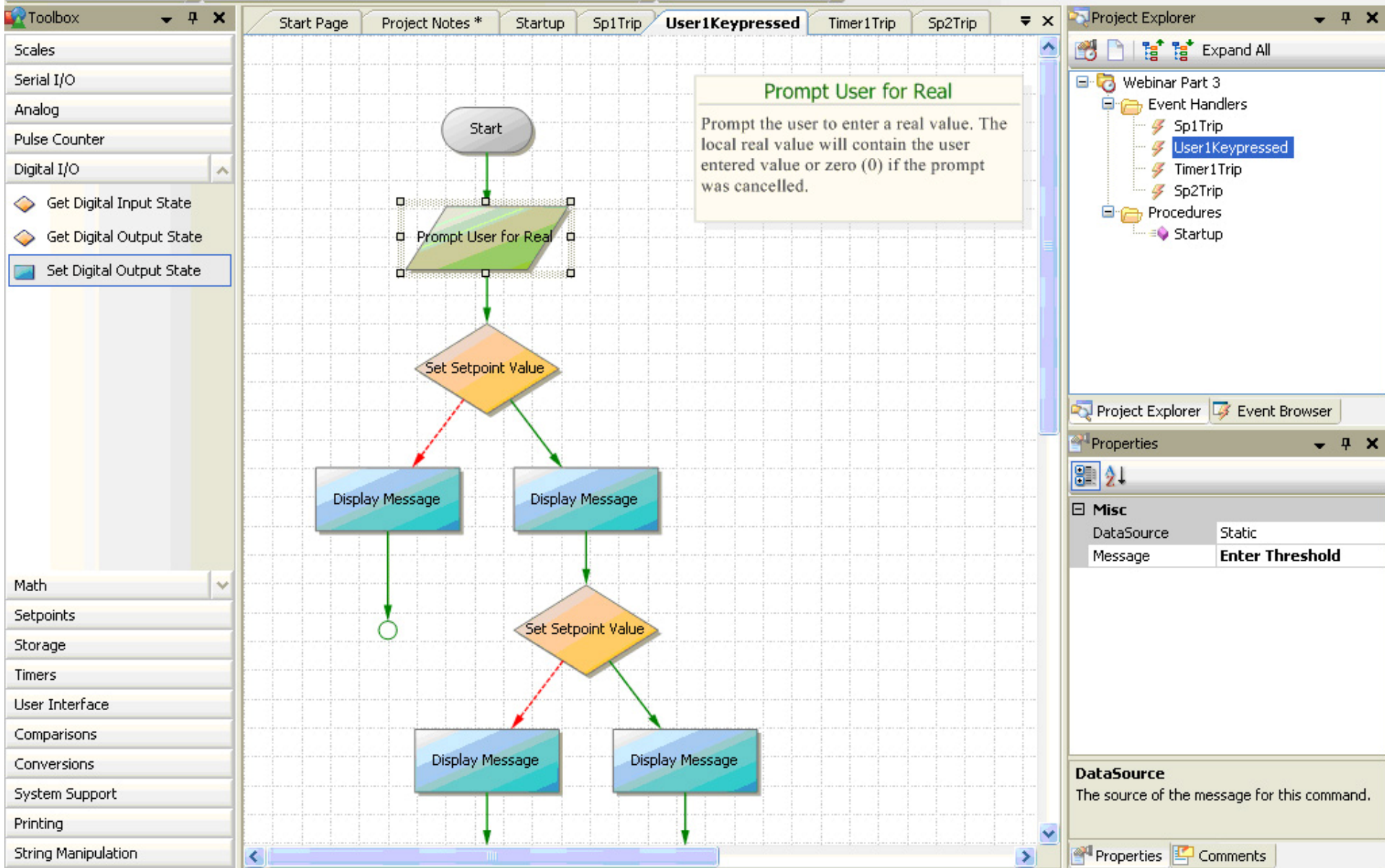
KeyNumber1

KeyTextEdit Theshold

KeyText

The text for the user key.

(509,129)



Webinar Part 3 - iRite IDE - Sp1Trip

File Edit View Project Tools Window Help

100%

Toolbox

Scales

Serial I/O

Analog

Pulse Counter

Digital I/O

Get Digital Input State

Get Digital Output State

Set Digital Output State

Math

Setpoints

Storage

Timers

User Interface

Comparisons

Conversions

System Support

Printing

String Manipulation

Start Page

Project Notes *

Startup

Sp1Trip

User1Keypressed

Timer1Trip

Sp2Trip

Project Explorer

Expand All

Webinar Part 3

Event Handlers

Sp1Trip

User1Keypressed

Timer1Trip

Sp2Trip

Procedures

Startup

Project Explorer

Event Browser

Properties

Misc

Bit	1
Slot	Onboard
State	Off

Bit

The number of the input point to test. Bit numbers begin at one.

Properties

Comments

Get Motion State

Get Scale Value

Set Digital Output State

Display Message

Set Digital Output State

Set Digital Output State

Real To String

Write Serial

Set Digital Output State

Display Message

Set Duration

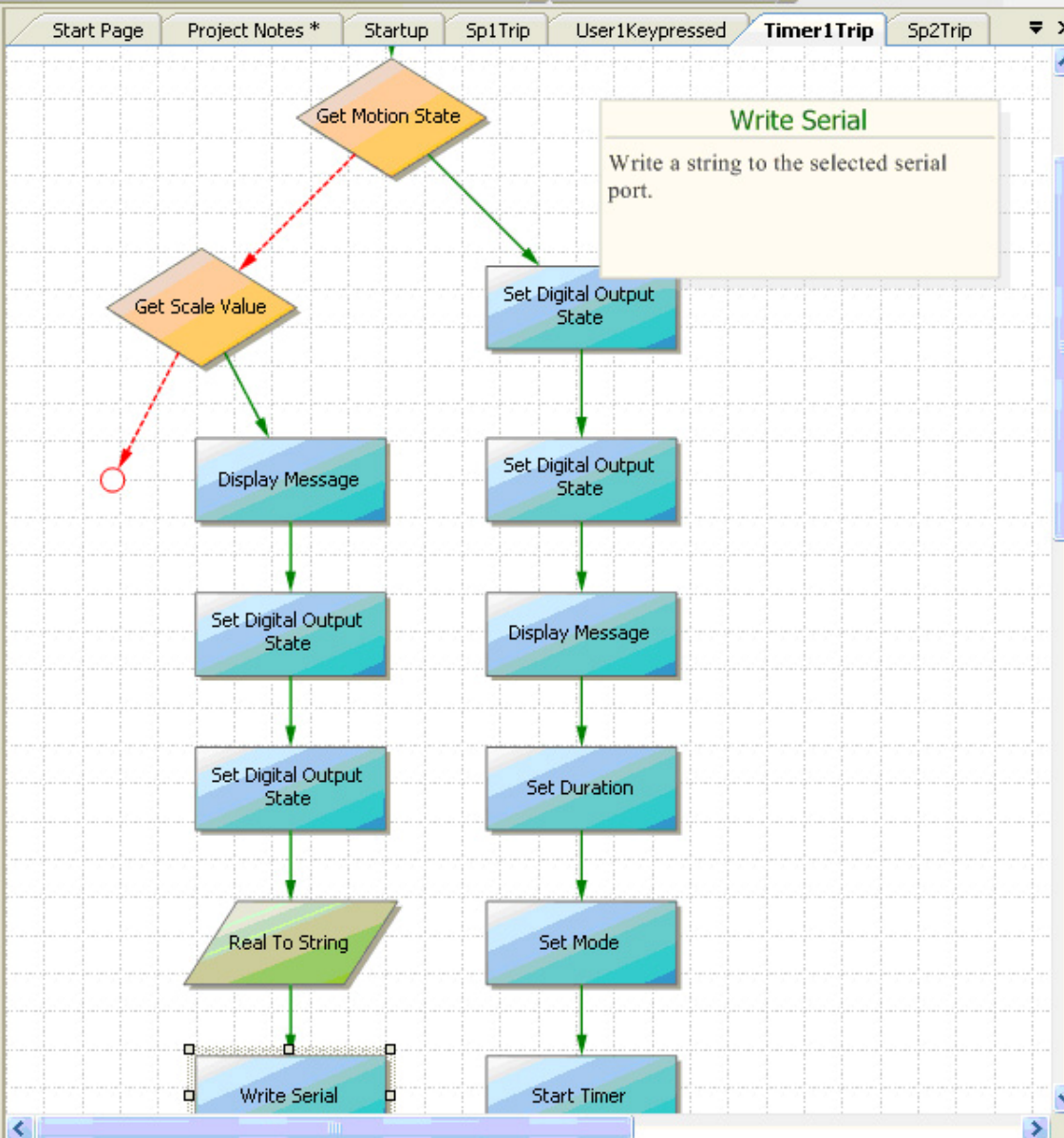
Set Mode

Start Timer

(345,154)

- Scales
- Serial I/O
- Analog
- Pulse Counter
- Digital I/O
 - Get Digital Input State
 - Get Digital Output State
 - Set Digital Output State
- Math
- Setpoints
- Storage
- Timers
- User Interface
- Comparisons
- Conversions
- System Support
- Printing
- String Manipulation

(359,105)



- Expand All
- Webinar Part 3
 - Event Handlers
 - Sp1Trip
 - User1Keypressed
 - Timer1Trip
 - Sp2Trip
 - Procedures
 - Startup

Misc	
Data	The stable weight is
DataSource	Static
IncludeTerminator	False
PortNumber	2

Data
The data to send, or the index of the stored data to send.

Webinar Part 3 - iRite IDE - Sp2Trip

File Edit View Project Tools Window Help

100%

Toolbox

- Scales
- Serial I/O
- Analog
- Pulse Counter
- Digital I/O
 - Get Digital Input State
 - Get Digital Output State
 - Set Digital Output State
- Math
- Setpoints
- Storage
- Timers
- User Interface
- Comparisons
- Conversions
- System Support
- Printing
- String Manipulation

Start Page Project Notes * Startup Sp1Trip User1Keypressed Timer1Trip **Sp2Trip**

Start

Display Message

Pause Timer

Set Digital Output State

Set Digital Output State

Display Message

Display a message to the user in the indicator display area.

Project Explorer

- Webinar Part 3
 - Event Handlers
 - Sp1Trip
 - User1Keypressed
 - Timer1Trip
 - Sp2Trip**
 - Procedures
 - Startup

Project Explorer Event Browser

Properties

Misc

DataSource	Static
Message	

DataSource

The source of the message for this command.

Properties Comments

(155,150)

Webinar Part 4 - iRite IDE - Startup

File Edit View Project Tools Window Help

Toolbox

Scales

Serial I/O

Analog

Pulse Counter

Digital I/O

Math

Setpoints

Storage

Timers

User Interface

Comparisons

Conversions

Integer To String

String To Integer

Real To String

String To Real

DateTime To String

System Support

Printing

String Manipulation

Start Page

Project Notes

User1Keypressed

User2Keypressed

Startup

Set User Key Text

Set User Key Text

Write String

Write String

Write Integer

Set User Key Text

Set the text for the selected user-defined soft key.

Project Explorer

Expand All

Webinar Part 4

- Event Handlers
 - User1Keypressed
 - User2Keypressed
- Procedures
 - Startup

Project Explorer Event Browser

Properties

Misc

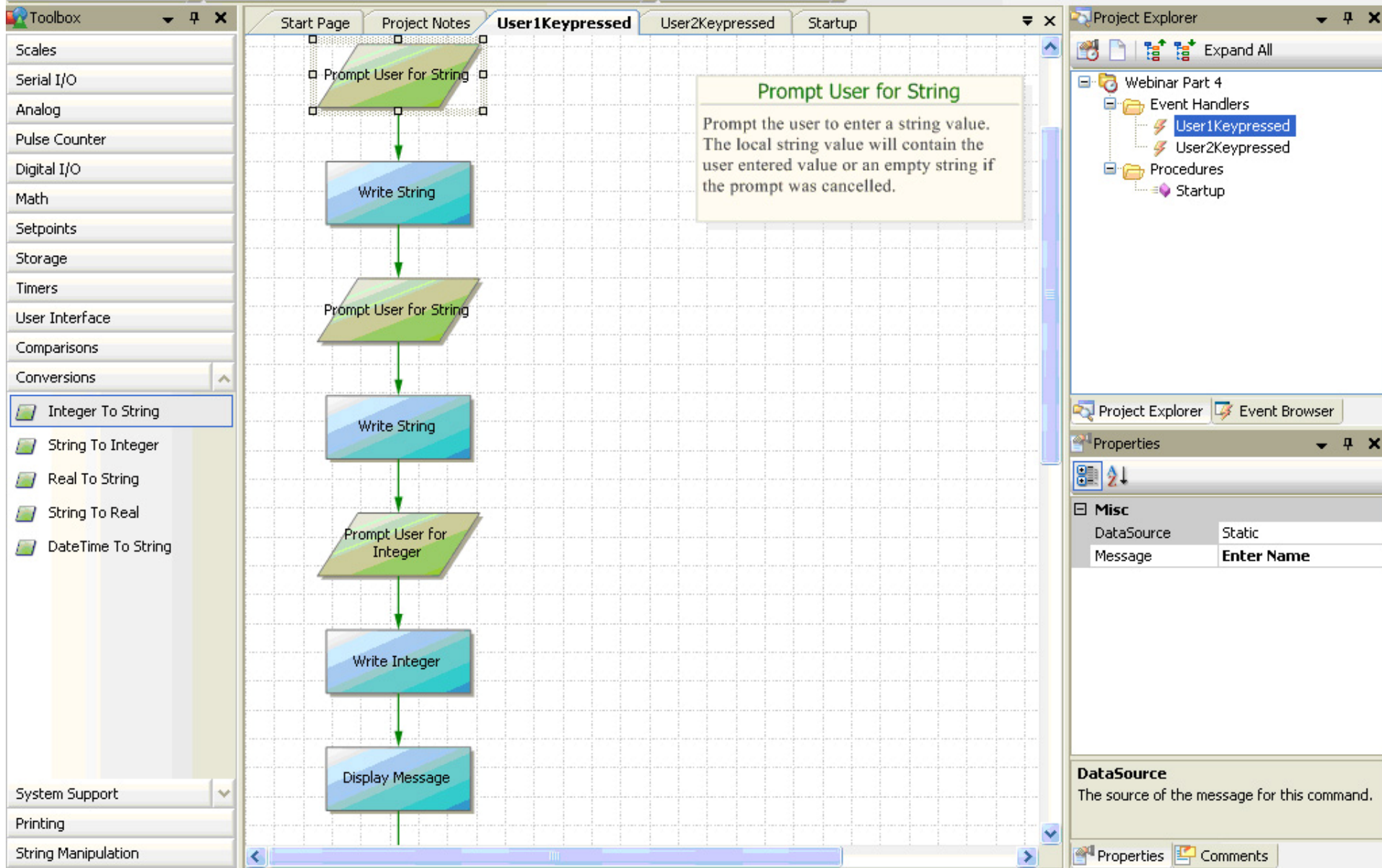
KeyNumber	1
KeyText	Enter Header Info

KeyNumber

The number of the user key to edit.

Properties Comments

(128,33)



Toolbox

- Scales
- Serial I/O
- Analog
- Pulse Counter
- Digital I/O
- Math
- Setpoints
- Storage
- Timers
- User Interface
- Comparisons
- Conversions
 - Integer To String**
 - String To Integer
 - Real To String
 - String To Real
 - DateTime To String

System Support

- Printing
- String Manipulation

Start Page **Project Notes** **User1Keypressed** **User2Keypressed** **Startup**

Write Serial

Write a string to the selected serial port.

Integer To String

Write Serial

Get Scale Value

Real To String

Project Explorer

Expand All

- Webinar Part 4
 - Event Handlers
 - User1Keypressed
 - User2Keypressed**
 - Procedures
 - Startup

Project Explorer **Event Browser**

Properties

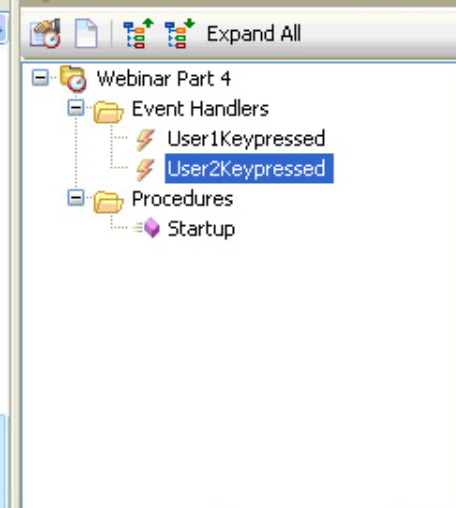
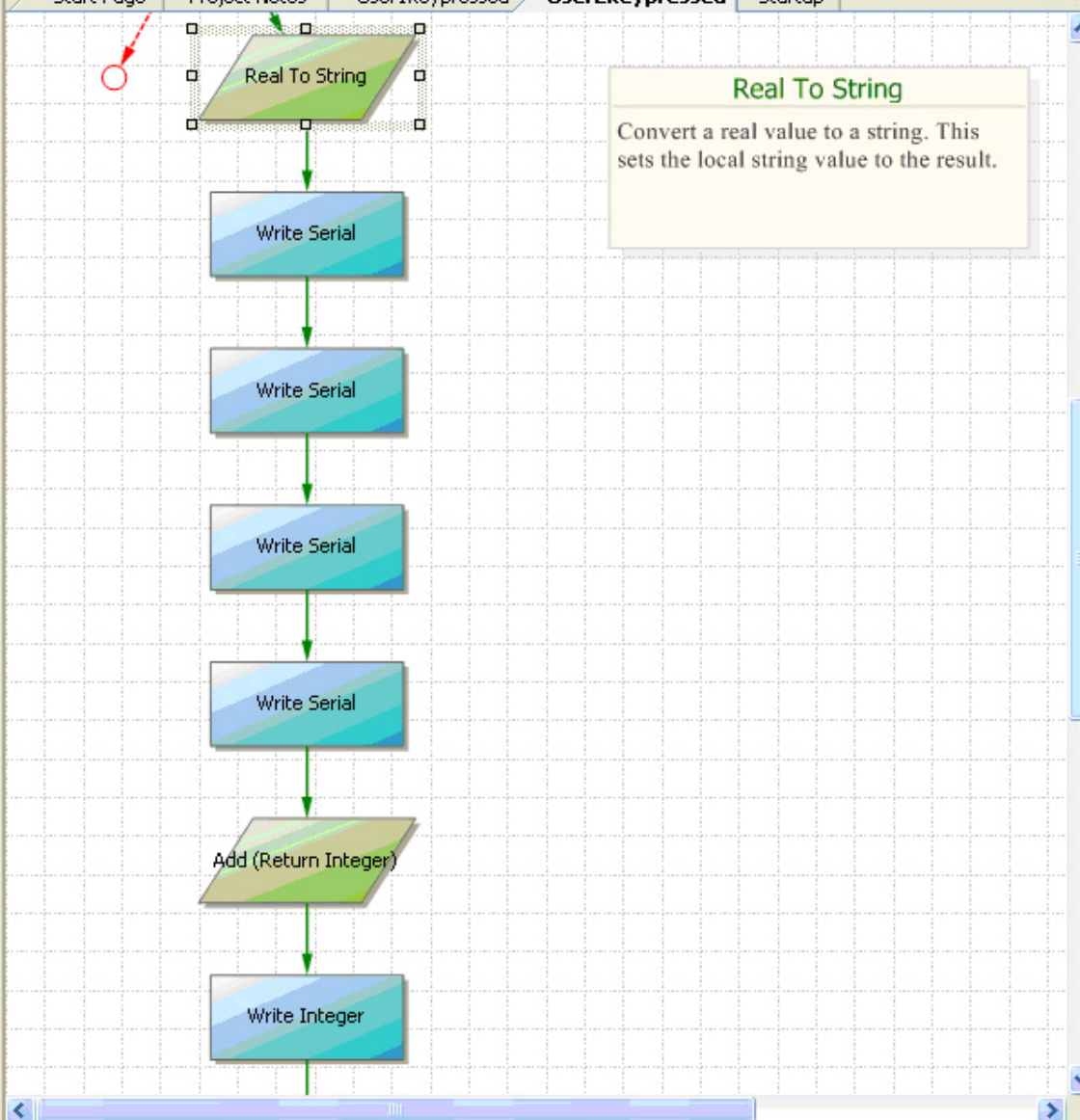
Misc

Data	1
DataSource	StoredWithStaticIndex
IncludeTerminator	True
PortNumber	2

DataSource

The source of the message data for this command.

Properties **Comments**



Misc	
DataSource	Local
Precision	0
Value	1
Width	1

DataSource
The source of the data to for this command.

- Integer To String
- String To Integer
- Real To String
- String To Real
- DateTime To String

- System Support
- Printing
- String Manipulation

Real Array:

- 1.
- 2.
- 3.
- 4.
- 5.

String Array:

1. Name
2. Phone
- 3.
- 4.
- 5.

Integer Array:
1. Ticket Number
2.
3.
4.
5.

Project Explorer

Webinar Part 4

- Event Handlers
 - User1Keypressed
 - User2Keypressed
- Procedures
 - Startup

Project Explorer Event Browser

Properties

DataSource	Local
Precision	0
Value	1
Width	1

DataSource
The source of the data to for this command.

Properties Comments